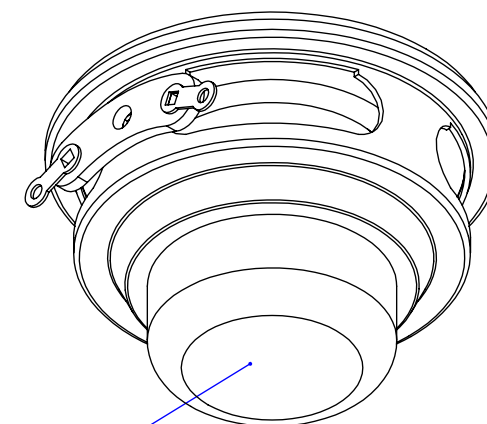
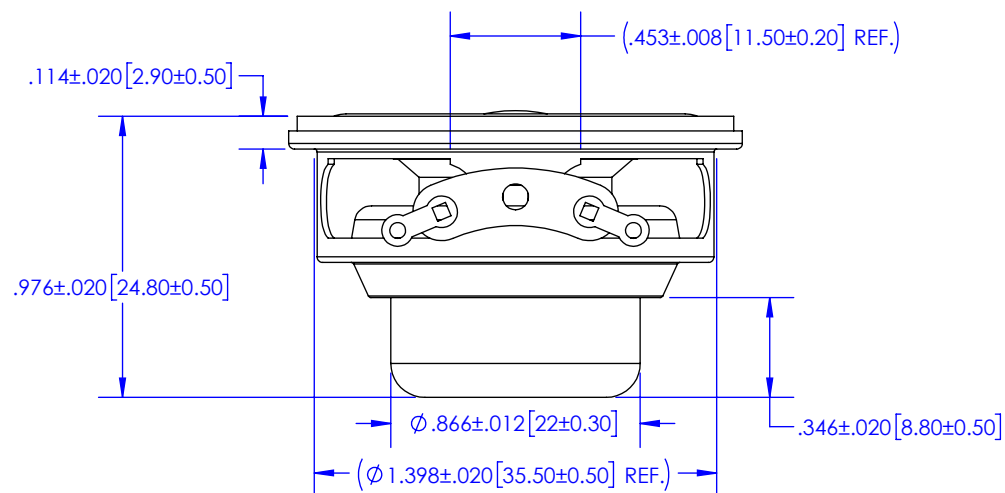
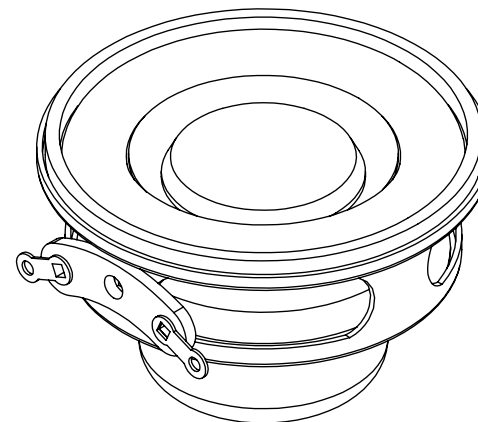
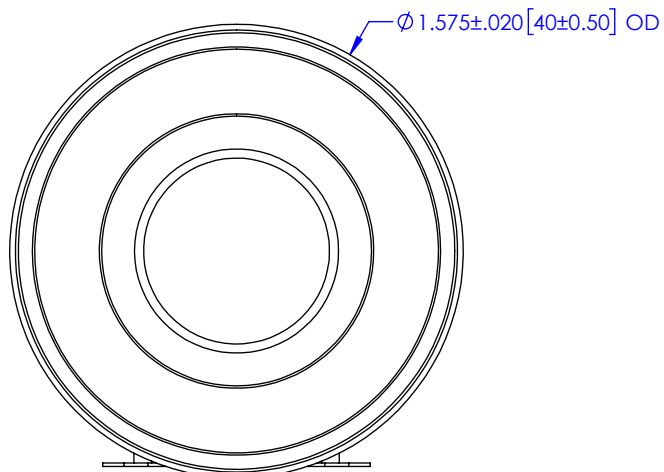


DRAWING REVISION RECORD

REV.	DESCRIPTION	DATE	APPROVED
X1	INITIAL RELEASE OF PRINT FOR DEVELOPEMENT	3/18/17	



MARK PART WITH VENDOR PART
NUMBER ON THIS SURFACE

PERFORMANCE SPECIFICATIONS

NOMINAL IMPEDANCE	4 Ohms \pm 0.6 Ohms at 1000Hz
DCR	3.6 Ohms \pm 0.252 Ohms
RESONANT FREQUENCY	135 Hz \pm 27 Hz
SENSITIVITY SPL	82.1 AVERAGED 300 - 3000 Hz
FREQUENCY RESPONSE	100 - 20 KHz
RATED POWER	2 Watts
MAX POWER	5 Watts

NOTES:

ALL PARTS TO BE ROHS COMPLIANT.

MODELED/DETAILED BY: DAW	DATE 3/18/17	UNLESS OTHERWISE SPECIFIED: UNITS: INCHES [MILLIMETERS]
CHECKED BY:	DATE	TOLERANCES: X.XXX [X.XX] = \pm 0.005 [0.13]
APPROVED BY:	DATE	ANGLES = \pm 2° HOLES = \pm 0.002 [0.05]
PROPRIETARY AND CONFIDENTIAL THE INFORMATION CONTAINED IN THIS DRAWING IS THE SOLE PROPERTY OF MISCO. ANY REPRODUCTION IN PART OR AS A WHOLE WITHOUT THE WRITTEN PERMISSION OF MISCO IS PROHIBITED.		MATERIAL PER PART
		FINISH PER PART

MISCO.

2637 32ND AVENUE SOUTH
MINNEAPOLIS, MN 55406
PHONE #: 612-825-1010
FAX #: 612-825-7010

DRAWING TITLE:
 ϕ 40mm SPEAKER

SIZE A	PART NO.: 88046	REV. X1
SCALE: 1.5:1		DO NOT SCALE DRAWING
		SHEET 1 OF 1