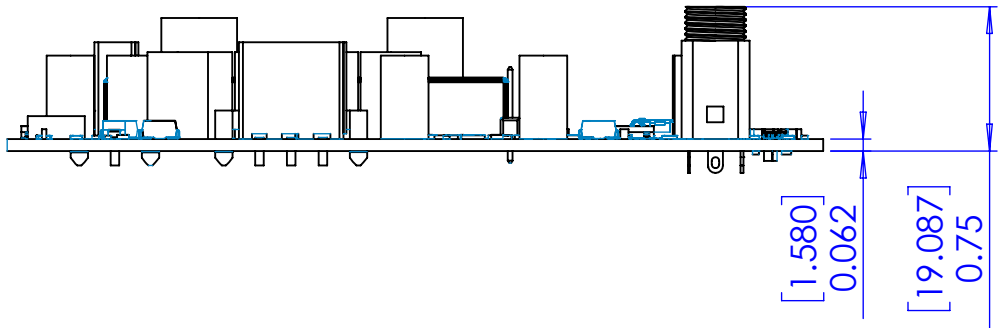
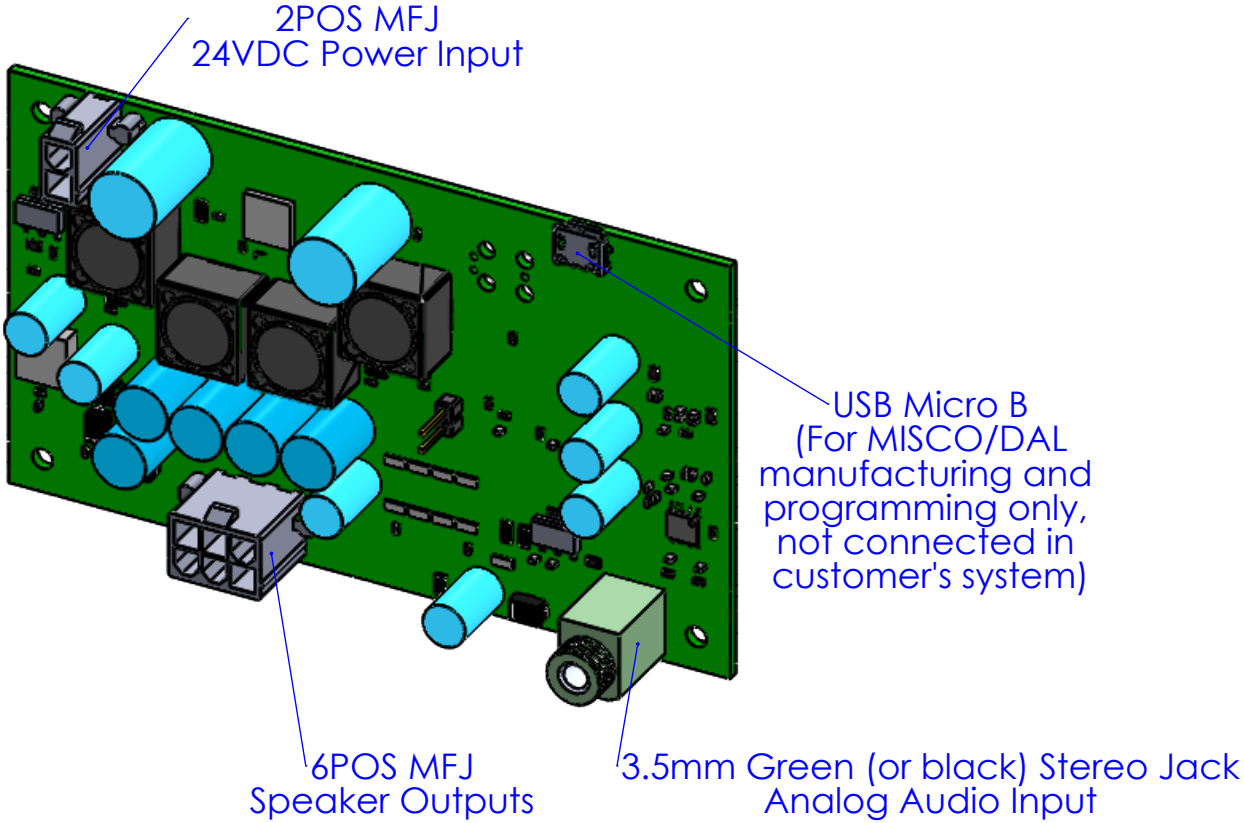
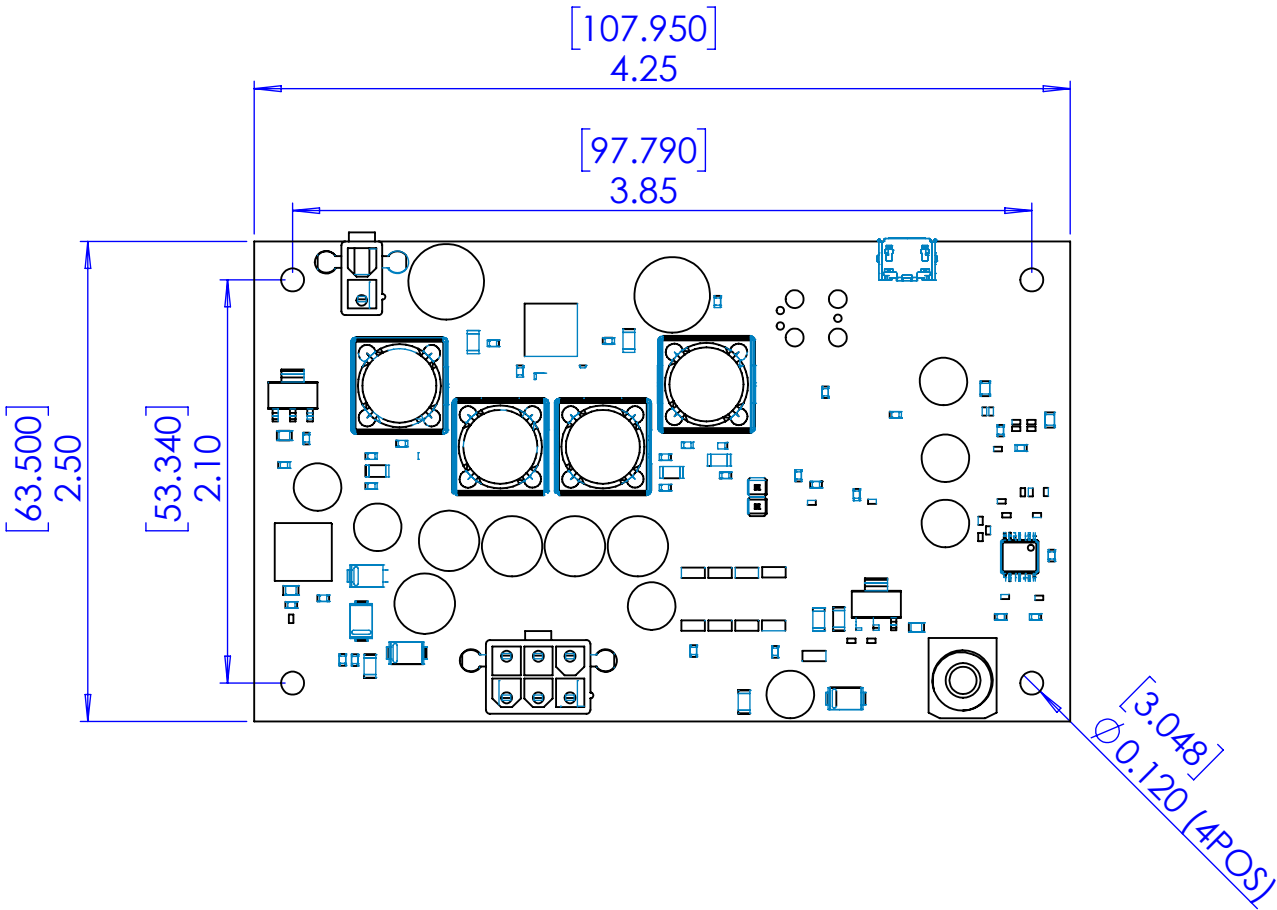


2x3 (6POS) MFJ			
SPEAKER OUTPUTS			
Pin	Signal	Pin	Signal
1	SUBWOOFER +	4	SUBWOOFER -
2	RIGHT +	5	RIGHT -
3	LEFT +	6	LEFT -
2x1 (2POS) MFJ			
DC POWER INPUT			
Pin	Signal	Pin	Signal
1	24VDC	2	GROUND

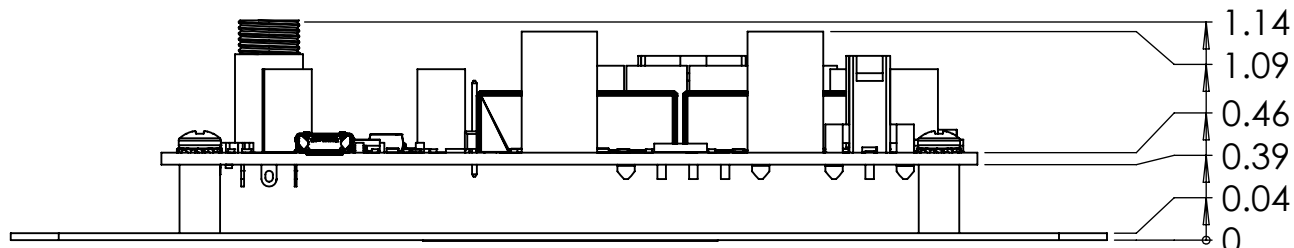
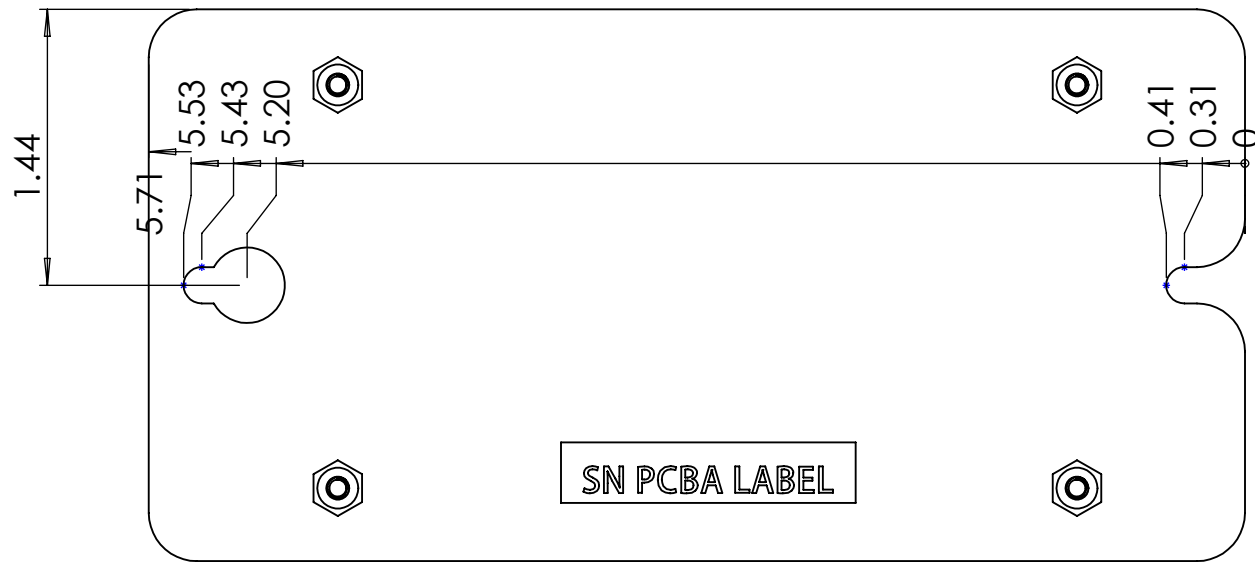
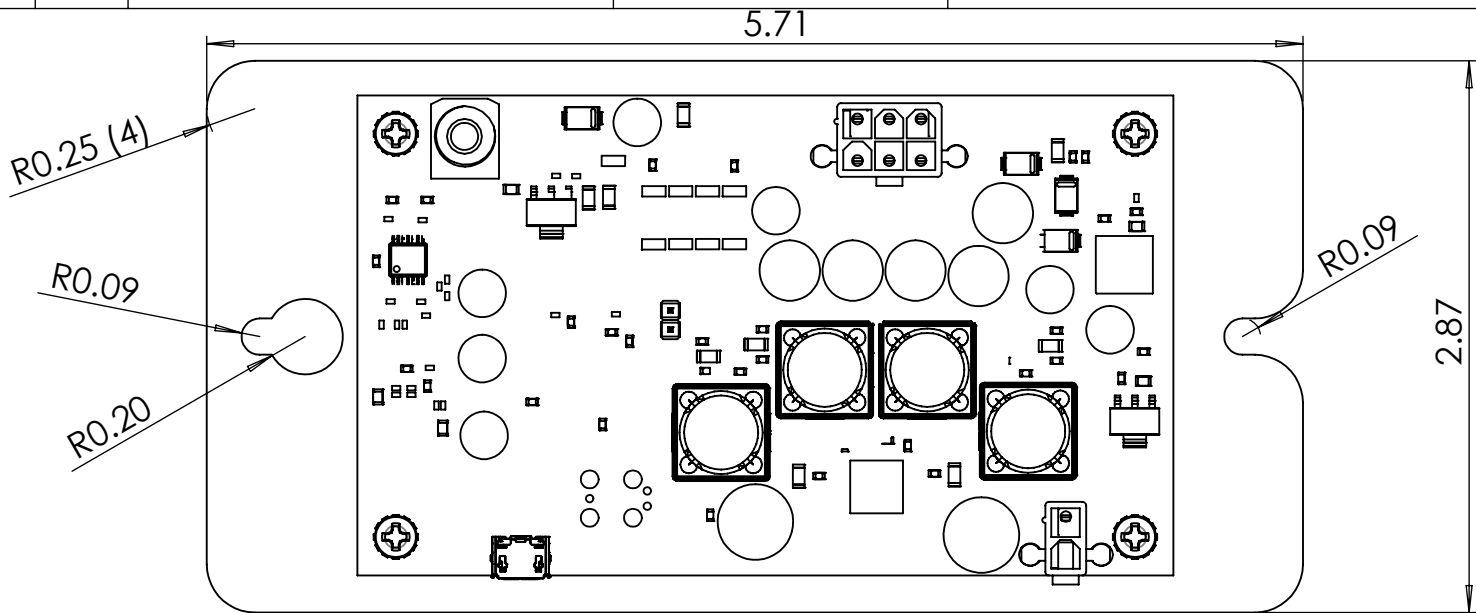
- 2.1 CLASS D AMPLIFIER FEATURE OVERVIEW:
- STEREO ANALOG INPUT
  - 12-24VDC POWER INPUT
  - LEFT/RIGHT 13W/CH
  - SUBWOOFER 25W
  - DSP 5 BAND EQ
  - DSP 2 BAND DYNAMICS
  - DSP CROSSOVER

REVISIONS			
REV.	DESCRIPTION	DATE	DRAWN
X1	INITIAL RELEASE	2/26/18	JPG
A	RELEASED FOR PRODUCTION. BLACK COLOR 3.5mm INPUT JACK APPROVED FOR SECOND SOURCE.	11/12/18	JPG

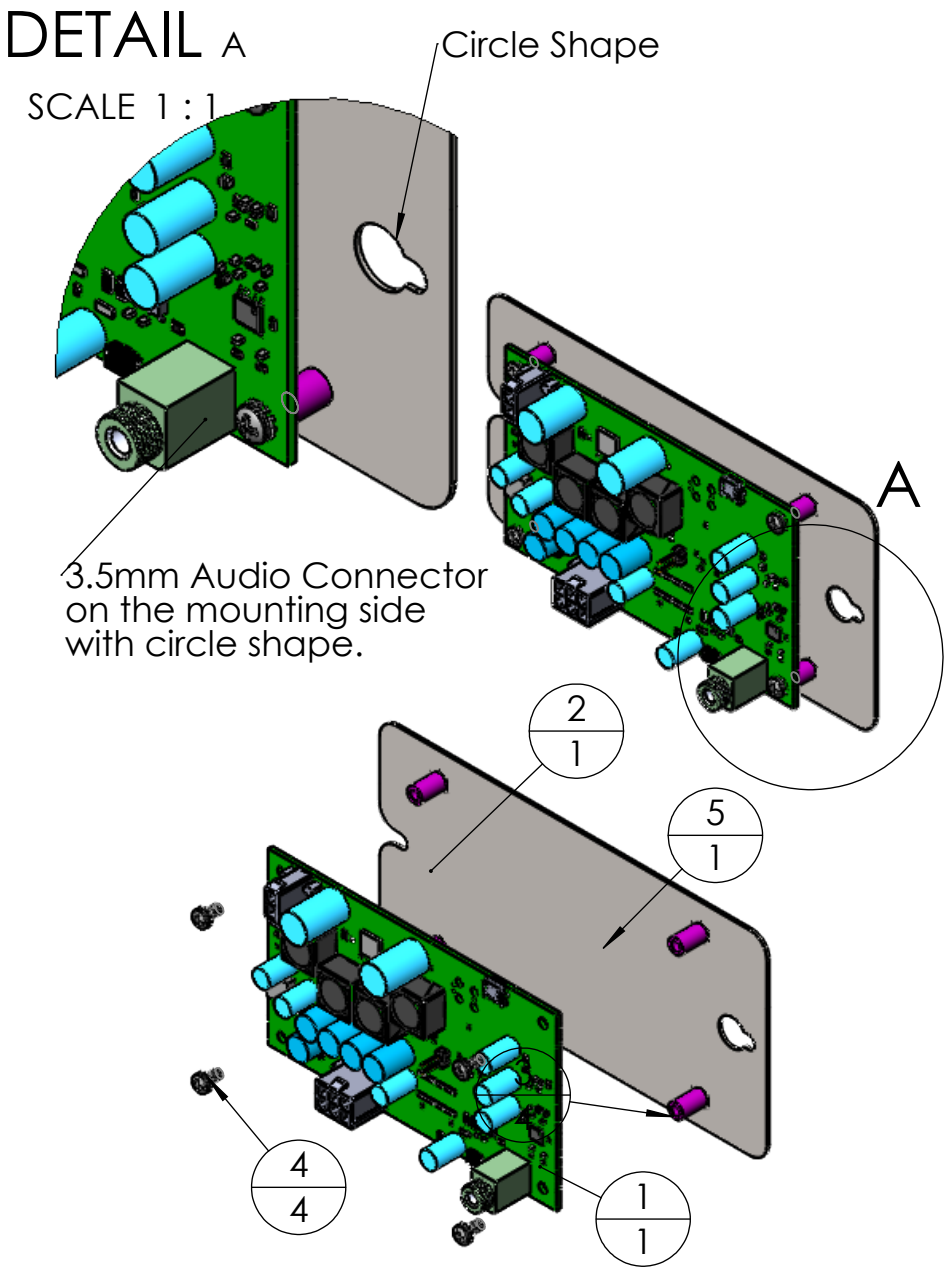


<b>MODELED/DETAILED BY</b> JPG		<b>DATE</b> 2/26/18	<b>UNITS: INCHES [MILLIMETERS]</b>		<div><b>MISCO</b></div> <div>2637 32ND AVENUE SOUTH MINNEAPOLIS, MN 55406 PHONE #: 612-825-1010 FAX #: 612-825-7010</div>
<b>APPROVED BY</b>		<b>DATE</b>	TOLERANCES UNLESS OTHERWISE SPECIFIED:  +/- 0.020" [0.5mm]		
<b>PROPRIETARY AND CONFIDENTIAL</b> THE INFORMATION CONTAINED IN THIS DRAWING IS THE SOLE PROPERTY OF MISCO. ANY REPRODUCTION IN PART OR AS A WHOLE WITHOUT THE WRITTEN PERMISSION OF MISCO IS PROHIBITED.			<b>TITLE:</b>  2.1 AMPLIFIER		
		THIRD ANGLE PROJECTION	<b>DWG. SIZE:</b> B	<b>PART NO.:</b> 38083 / 93104	<b>REV.:</b> A
			<b>DO NOT SCALE DRAWING</b>	<b>SCALE:</b> 1:1	<b>SHEET 1 OF 2</b>

ITEM NO.	QTY.	MFG	PART NUMBER	DESC
1	1	Custom for Digital Audio Labs	DAL 07-20-79 PCBA	Amplifier PCBA, MISCO 38052
2	1	Any	69591900	Steel Mounting Bracket
3	4	PENN ENGINEERING or Approved Alternate	SO-3.5M3-10 ZI	PEM Standoffs, Pressed into 69591900
4	4	Fastener Superstore or Approved Alternate	90402A702	M3-0.5 x 6 mm SEMS Screws / External Tooth Washer / Phillips / Pan Head / Steel / Zinc
5	1	Any	SN PCBA LABEL	39mm x 8mm SN PCBA Label



MECHANICAL ASSEMBLY REVISIONS			
REV	DESCRIPTION	DATE	DRAWN
X1	Initial Release	7/17/19	JPG



	NAME	DATE
DRAWN	JPG	7/20/2020
CHECKED		
ENG APPR.		
MFG APPR.		
Q.A.		
PROPRIETARY AND CONFIDENTIAL		
THE INFORMATION CONTAINED IN THIS DRAWING IS THE SOLE PROPERTY OF MISCO. ANY REPRODUCTION IN PART OR AS A WHOLE WITHOUT WRITTEN PERMISSION IS PROHIBITED.		

**MISCO**

TITLE: 2.1 AMPLIFIER ON BRACKET

SIZE	PART NUMBER	REV.
B	38083 / 93104	X1

SCALE: SHEET 2 OF 2